

Primary Grades **Gr 1-3** **SCHOOL PROGRAMS**

These programs focus on how seasonal changes affect living things. Choose a Groundstation Canada Theatre demonstration, a Planetarium show, and a Workshop.

PROGRAM A: \$25.40 PER STUDENT | ABOUT 3.5 HOURS

- PLANETARIUM SHOW: INDIGENOUS ASTRONOMY
- GROUNDSTATION CANADA: DAY IN SPACE
- WORKSHOP: SECRETS OF THE SKY / THIS LITTLE LIGHT OF MINE
- COSMIC COURTYARD EXHIBIT SPACE

PROGRAM B: \$19.25 PER STUDENT | ABOUT 3 HOURS

- PLANETARIUM SHOW: INDIGENOUS ASTRONOMY
- WORKSHOP: SECRETS OF THE SKY / THIS LITTLE LIGHT OF MINE
- COSMIC COURTYARD EXHIBIT SPACE

PROGRAM C: \$17.70 PER PERSON | ABOUT 2.5 HOURS

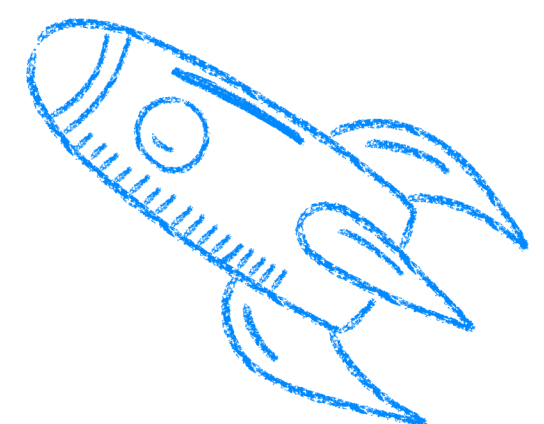
- PLANETARIUM SHOW: INDIGENOUS ASTRONOMY
- GROUNDSTATION CANADA: DAY IN SPACE
- COSMIC COURTYARD EXHIBIT SPACE

PROGRAM D: \$11.65 PER STUDENT | ABOUT 2 HOURS

- PLANETARIUM SHOW: INDIGENOUS ASTRONOMY
- COSMIC COURTYARD EXHIBIT SPACE



[Book your trip: spacecentre.ca](http://spacecentre.ca)



Primary Grades 1 - 3

OUR SPACE, SHOWS, AND WORKSHOPS

A thick, horizontal blue brushstroke underline that spans most of the width of the page, positioned below the main heading.

COSMIC COURTYARD:

Visit our space-themed, hands-on exhibit space. Students can enjoy a range of activities like Star Stuff, morphing into an alien, touching a Moon rock, trying to lift a meteorite.

PLANETARIUM SHOW

One Sky Project: Indigenous Astronomy

This collection of three short films made for the One Sky Project features Indigenous perspectives of astronomy, space, time and navigation that have been inspiring minds for millennia.

Thunderbird: The sky is a powerful tool for measuring time, and for the Diné, or Navajo people, the Thunderbird transcends space and time, revealing the passage of seasons and connecting earth and sky.

Celestial Canoe: A First People of what is now northern Canada, the Innu, watched the slow turn of a canoe in the sky mirroring the change in seasons on land. This celestial canoe guided them through a particularly challenging part of the year.

Hawaiian Wayfinders: Hear from a Hawaiian navigator as she describes how the sky provides a compass and calendar for the oceanic people whose voyages connected islands throughout the Pacific Ocean.

GROUNDSTATION CANADA SHOW

Day in Space

Introduce your students to the world of the International Space Station (ISS) where astronauts live and work. This live science show addresses the differences between living and working on Earth versus the microgravity environment of the ISS. What exactly do astronauts do up there? From microgravity experiments to eating and sleeping while floating - find out what it takes to live and work in space

HANDS-ON WORKSHOPS

Secrets of the Sky

What is light and how do astronomers make use of its properties? Students will experiment with different tools and use observation and questioning skills to develop a better understanding of the properties of light and sources of natural and artificial light.

- Observable patterns and cycles occur in the local sky and landscape
- Day and Night and how it affects nocturnal or diurnal animals
- Seasons and how sunlight affects living things including ourselves

This Little Light of Mine

What is light and how do astronomers make use of its properties? Students will experiment with different tools and use observation and questioning skills to develop a better understanding of the properties of light and sources of natural and artificial light.

- Natural vs artificial light sources, explore observations with flashlights
- Observable patterns and cycles occur in the local sky and landscape
- Natural Light provides us with day and night, and helps plants grow

